

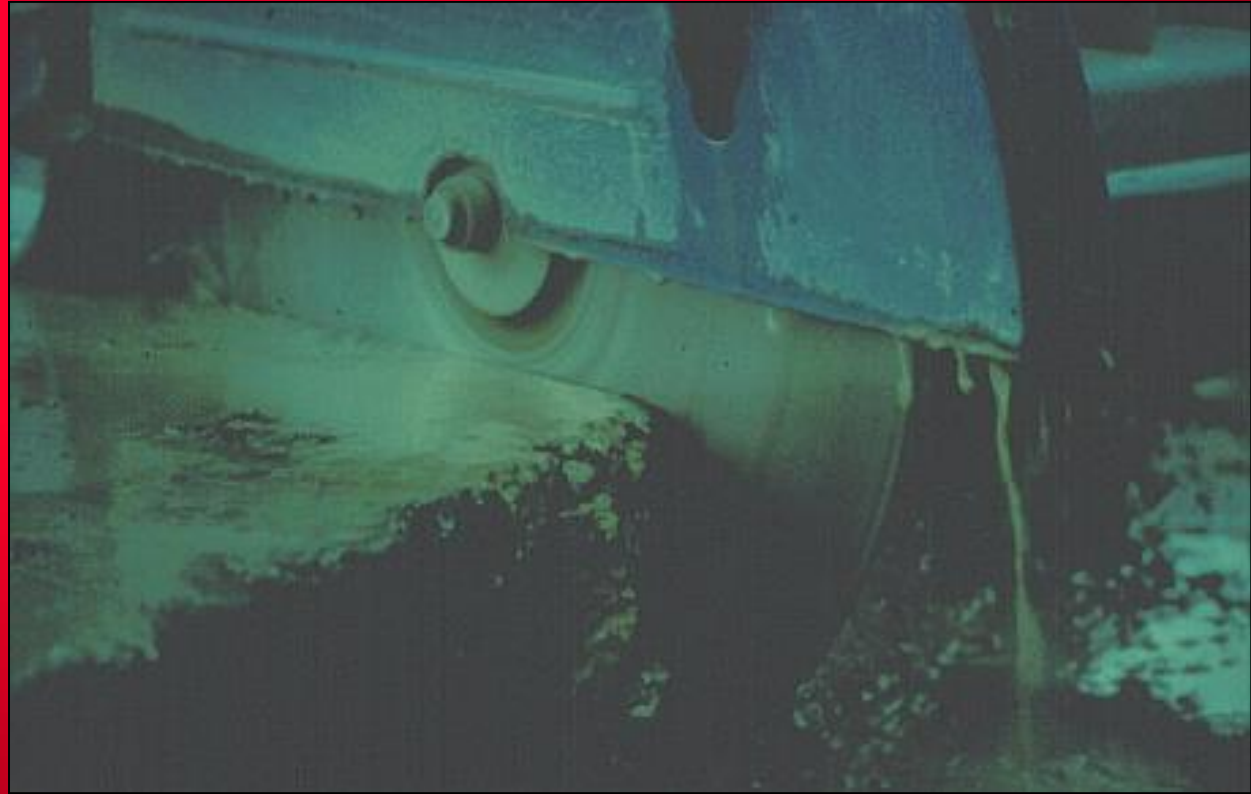


**ORO-FILIPINO**

ENTERPRISES & DEV'T. CORP.

*Bridging the Gap*

# Installation Procedure



**Lay-out and saw cut the Joint  
Typically 300mm to 500mm**



**ORO-FILIPINO**

ENTERPRISES & DEV'T. CORP.

# Installation Procedure

*Bridging the Gap*



**Cut to full depth of wearing course,  
minimum thickness of expansion  
joint is 50mm**



**ORO-FILIPINO**  
ENTERPRISES & DEV'T. CORP.

*Bridging the Gap*

# Installation Procedure



**Breaking of asphalt wearing course,  
to full depth thickness.**

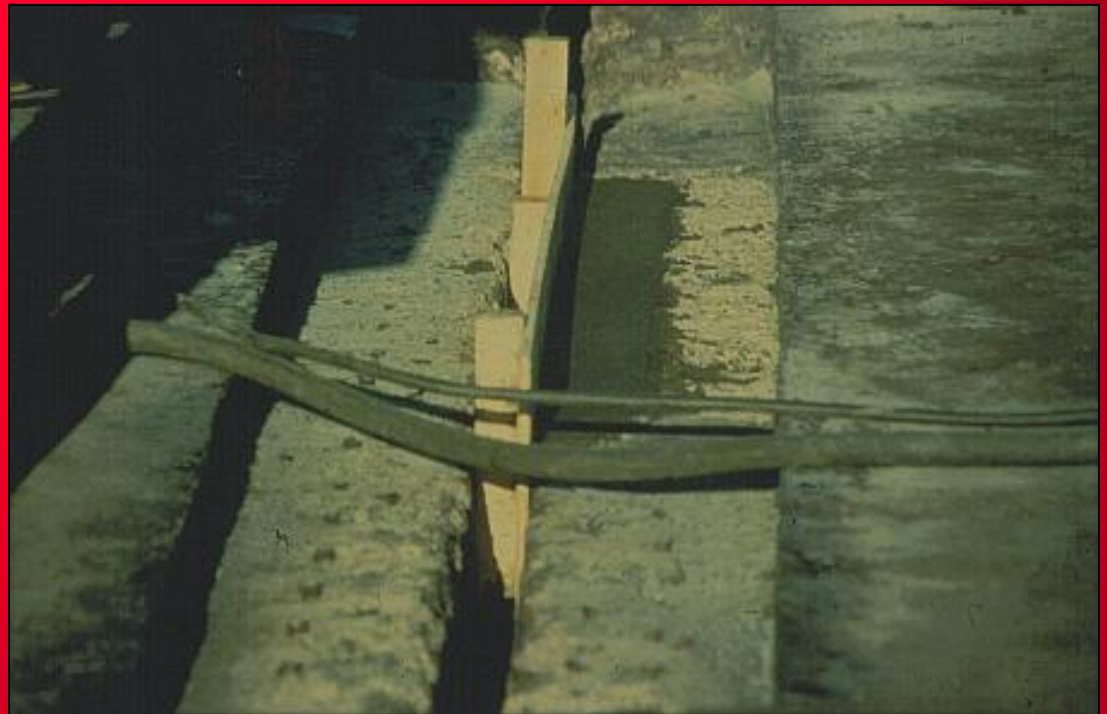


**ORO-FILIPINO**

ENTERPRISES & DEV'T. CORP.

*Bridging the Gap*

## Installation Procedure



**Clean thoroughly and remove all debris**

***For old bridge repair - repair damaged Deck prior to binder application***

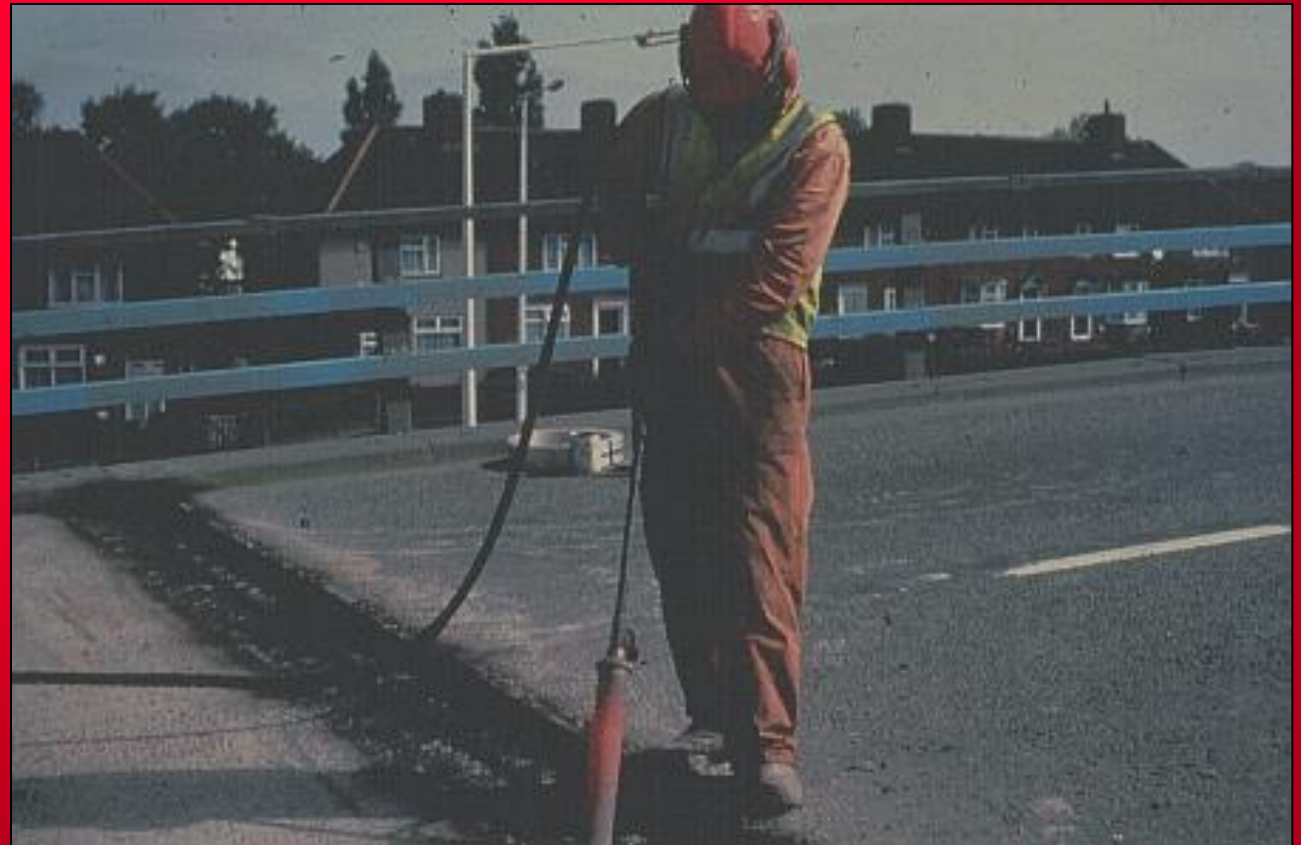


**ORO-FILIPINO**

ENTERPRISES & DEV'T. CORP.

*Bridging the Gap*

## Installation Procedure



**Clean the trench thoroughly  
using hot torch lance**



**ORO-FILIPINO**  
ENTERPRISES & DEV'T. CORP.

*Bridging the Gap*

## Installation Procedure



**Install PEJF Fillers about  
20mm below deck level**

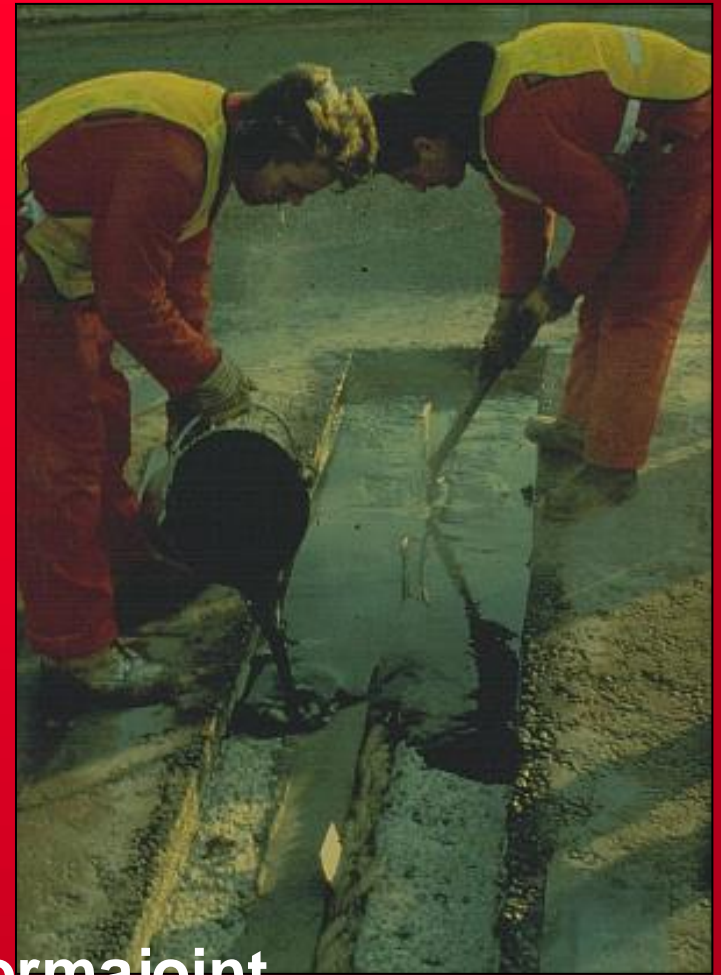




**ORO-FILIPINO**  
ENTERPRISES & DEV'T. CORP.

*Bridging the Gap*

# Installation Procedure



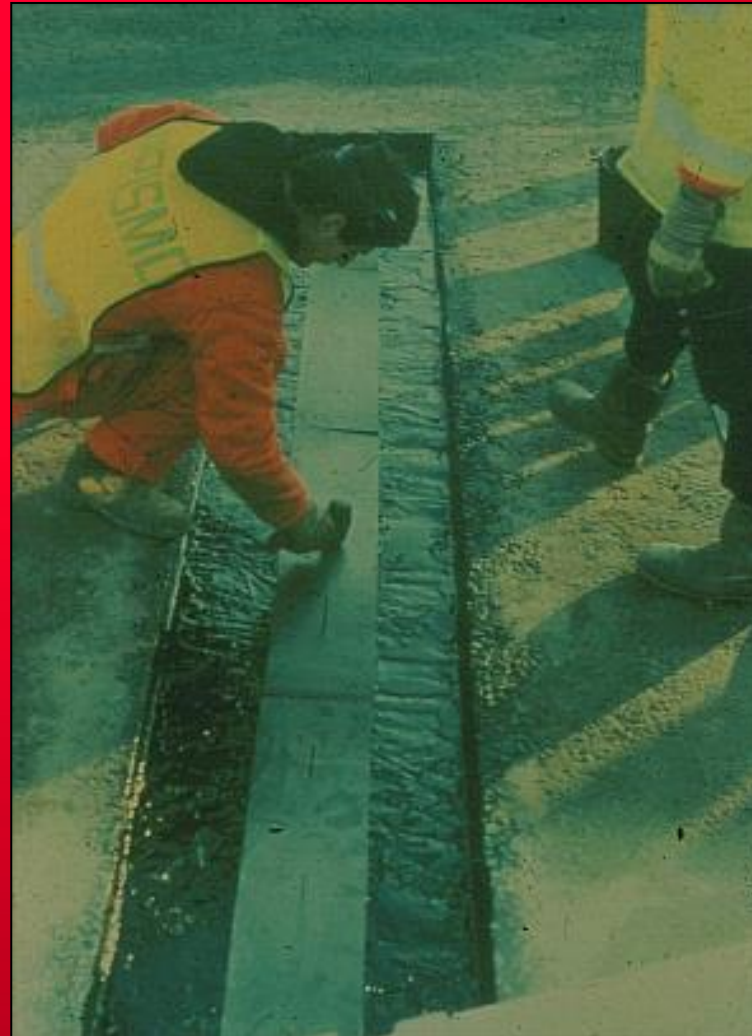
**Prime with BJ200 – Thormajoint binder**



**ORO-FILIPINO**  
ENTERPRISES & DEV'T. CORP.

*Bridging the Gap*

# Installation Procedure



**Install plate cover**





**ORO-FILIPINO**

ENTERPRISES & DEV'T. CORP.

*Bridging the Gap*

## Installation Procedure



**Heated binder at 180 to 200 deg C  
and stone at 110 to 150 deg. C.**



**ORO-FILIPINO**

ENTERPRISES & DEV'T. CORP.

*Bridging the Gap*

## Installation Procedure



**Install layer by layer, as per standard procedure**



**ORO-FILIPINO**

ENTERPRISES & DEV'T. CORP.

*Bridging the Gap*

## Installation Procedure



**Mix binder and stone thoroughly, ensuring that all stone are covered with binder.**



**ORO-FILIPINO**

ENTERPRISES & DEV'T. CORP.

*Bridging the Gap*

## Installation Procedure



**Mix properly and repeat the procedure up to about half stone below the deck.**



**ORO-FILIPINO**

ENTERPRISES & DEV'T. CORP.

*Bridging the Gap*

# Installation Procedure



**Mix binder and stone. Pour as the final layer, allow around half stone above the deck for compaction.**



**ORO-FILIPINO**

ENTERPRISES & DEV'T. CORP.

*Bridging the Gap*

## Installation Procedure



**Compact the expansion joint**





**ORO-FILIPINO**

ENTERPRISES & DEV'T. CORP.

*Bridging the Gap*

## Installation Procedure



The joint is **COMPACTED** and finished with Rubberized Bitumen top screed

# Installation Procedure



**G.F. FILIPINO**

ENTERPRISES & DEV'T. CORP.

*Bridging the Gap*



**Apply final top screed**







**ORO-FILIPINO**

ENTERPRISES & DEV'T. CORP.

*Bridging the Gap*

# Installation Procedure



**Water tight  
Expansion joint**

**Can be opened to traffic after  
30 minutes.**